



**Sharon Cranfield**  
 sales@bda4sale.com  
 441-305 8074  
 www.bda4sale.com

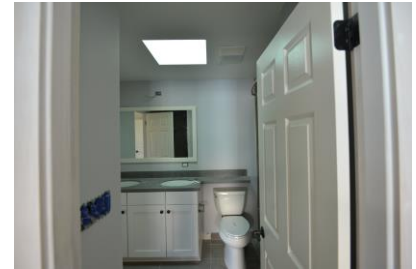


## The Vistas #2 – 2 Bedroom Middle Unit

*Spring Benny Road, Sandys*

**Price \$ 505,000**

MLS Number: 1134



The Vistas will delight from first glance! From the appealing entrance, with designer paving and landscaping, throughout the entire interior, this townhouse exceeds expectations.

Newly completed with two bedrooms and two and a half bathrooms. The Vistas are finished to a high standard and offer lots of useable space - inside and out. The home is tiled throughout with an attractive neutral light grey floor tile. Split unit air-conditioning is already installed – a definite bonus for buyers. The attractive well laid out kitchen with white cabinets, light grey solid surface counters, stainless appliances and feature lighting is open plan to the living area which then accesses the outside patio through French doors. The Laundry room boasts large washer and drier and provides good storage. There is also a conveniently located outside storage room.

PVC windows ensure that rooms are light and bright, heat and soundproof. Upstairs both bedrooms are well proportioned with good size closets fitted with shelving and hanging rods. Bathrooms are tastefully presented, lots of storage and counter space and are a good size. There are double sinks in the master bathrooms.

This property is ready for you to move right in.

- AC
- Patio
- Watlington
- Watlington at road
- Tank Size 1300 gal

- Overland View
- Built 2017
- PRC Holder

**Bedrooms** 2  
**Baths** 2.5  
**Sq. Ft.** 1100  
**Maintenance** \$ 250 /m  
**ARV** \$ TBD  
**Land Tax** \$ TBD p/a  
**Leasehold** 999 years

### Room Sizes

**Kitchen** 12 x 11  
**Living Room** 16 x 11  
**Dining Room** 12 x 11  
**Bedroom 1** 14 x 11  
**Bedroom 2** 14 x 10

Cranfields Property Bermuda Ltd

(Tel) | 441 305 8074 - (Email) sales@bda4sale.com – Website www.bda4sale.com

To the best of our knowledge the information contained herein is accurate however we cannot guarantee that it is correct.