



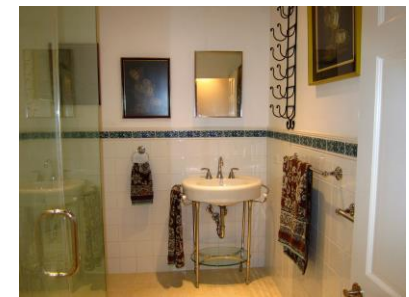
Sharon Cranfield
 sales@bda4sale.com
 441-305 8074
 www.bda4sale.com

Cranfields Property

Farmers Lane 18A (East)

Warwick
\$ 895,000

MLS Number: 1075



Loads of space inside and out at Farmers Lane set in a tranquil woodland setting.

Open plan and family friendly the kitchen opens to living area and patio with 2 bedrooms and a bathroom on the ground floor. A 3rd spacious bedroom suite/master is upstairs. The double story layout allows for lots of storage and, together with the multi-use lower level, make this a very appealing home for a large family

On that lower level is a big garage plus bonus bathroom, storage and utility room.

The property is currently rented but may be shown by appointment.

- AC
- Solar
- Garage
- Patio
- Watlington
- Tank 8310 gal
- Privacy
- Large garden
- Freehold
- Non Bermudian
- PRC Holder
- Bedrooms 3
- Baths 3
- Sq. Ft. 2025
- Lot Size 0.31 acre
- Zoning Res 2/Woodland
- ARV \$51,600
- Land Tax \$2,298 p/a
- Maintenance \$613/m

Room Sizes

Kitchen	14 x 9
Living Room	12 x 21
Dining Room	combined
Bedroom 1	16 x 14
Bedroom 2	14 x 13
Bedroom 3	12 x 10
Garage	15 x 18
Utility Room	16 x 7

Cranfields Property Bermuda Ltd

(Tel) 1 441 305 8074 - (Email) sales@bda4sale.com – Website www.bda4sale.com

To the best of our knowledge the information contained herein is accurate however we cannot guarantee that it is correct.